



Cambridge International Examinations
Cambridge International General Certificate of Secondary Education

GEOGRAPHY

0460/12

Paper 1

February/March 2017

INSERT

1 hour 45 minutes



READ THESE INSTRUCTIONS FIRST

The Insert contains Photograph A for Question 2, Fig. 5 and Photograph B for Question 3, Photograph C for Question 5 and Photograph D for Question 6.

The Insert is **not** required by the Examiner.

The syllabus is approved for use in England, Wales and Northern Ireland as a Cambridge International Level 1/Level 2 Certificate.

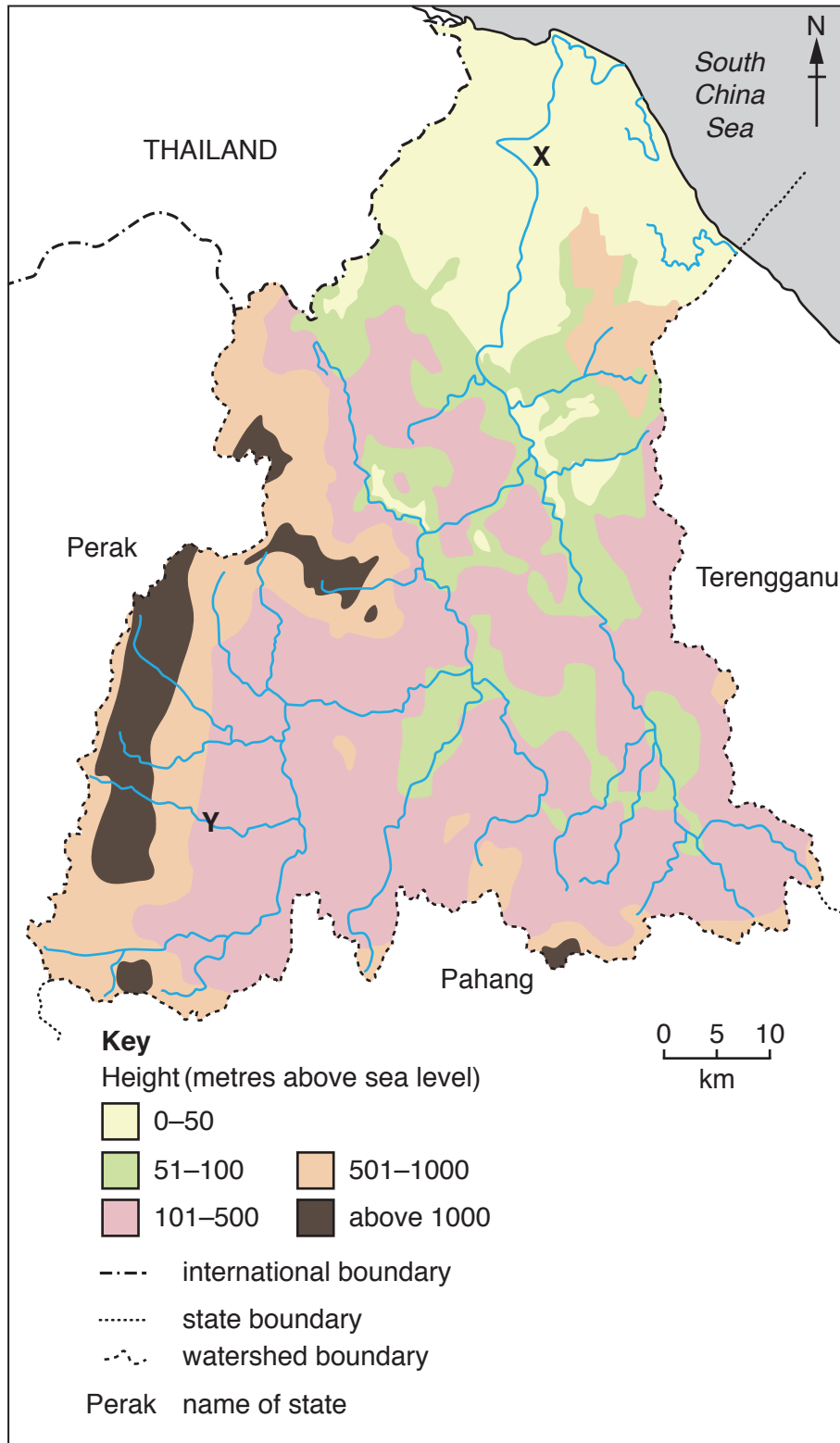
This document consists of **6** printed pages and **2** blank pages.

Photograph A for Question 2



Fig. 5 for Question 3

The Kelantan drainage basin in Malaysia



Photograph B for Question 3



Photograph C for Question 5



Photograph D for Question 6



BLANK PAGE

Permission to reproduce items where third-party owned material protected by copyright is included has been sought and cleared where possible. Every reasonable effort has been made by the publisher (UCLES) to trace copyright holders, but if any items requiring clearance have unwittingly been included, the publisher will be pleased to make amends at the earliest possible opportunity.

To avoid the issue of disclosure of answer-related information to candidates, all copyright acknowledgements are reproduced online in the Cambridge International Examinations Copyright Acknowledgements Booklet. This is produced for each series of examinations and is freely available to download at www.cie.org.uk after the live examination series.

Cambridge International Examinations is part of the Cambridge Assessment Group. Cambridge Assessment is the brand name of University of Cambridge Local Examinations Syndicate (UCLES), which is itself a department of the University of Cambridge.